

# Application Note AN0109: icon HW/FW/SW compatibility

## Introduction

icon actuators have shipped with both different firmware (FW) versions and different hardware (HW) versions since its release. Also, the Concens Actuator Studio (CAS) software (SW) tool is available in different versions. It is important to consider compatibility (ability to work together) when working with a setup consisting of one or more actuators and related software.

In general, it is recommended always to use newest version of HW, FW and SW.

## Compatibility

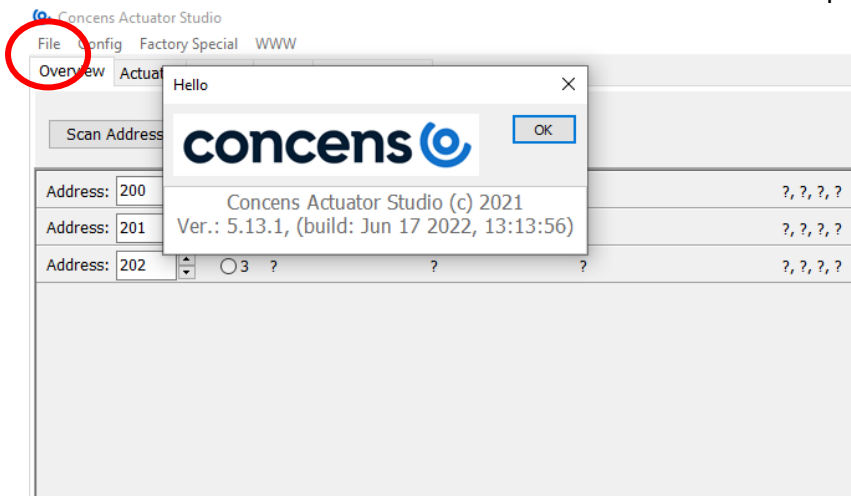
Basically, compatibility between FW and SW is achieved when the first digit of the version numbers match, i.e. FW version 5.xx requires SW version 5.xx. Newer SW will normally work with older FW; however, this is only valid for SW version 5 and up. For FW version 4.xx and older please use only FW version 4.xx and older. Please refer to table below.

<b>SW/FW</b>	icon35	icon50	icon60
SW version 1.xx to 4.xx	FW version 1.xx to 4.xx		
SW version 5.xx	FW version 5.xx		
<b>FW/HW</b>			
FW version 1.xx to 4.xx	HW V.1	HW V.2	HW V.2
FW version 5.xx	HW V.1	HW V.2	HW V.2

# Application Note AN0109: icon HW/FW/SW compatibility

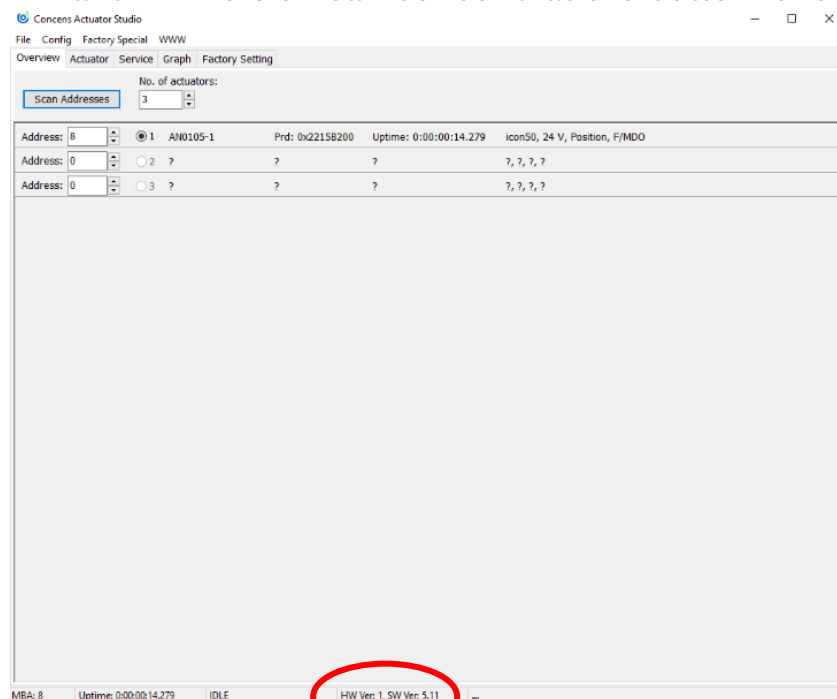
## How to determine SW, FW and HW version in CAS

The SW version can be found under “File – Show splash” or Ctrl-S:



In this case the SW version is 5.13.1, i.e. actuator needs FW version 5.xx.

FW and HW version can be found at the bottom of the overview screen:



In this case FW version is 5.11, which is compatible with SW version 5.13.1.

Concents A/S

12.01.2024 – MTS/RL